



FAST-TRAK™

**UNIVERSITY-BRANDED PORTFOLIO SIMULATIONS
FOR YOUR BUSINESS SCHOOL OR TRADING ROOM**

STOCKS • BONDS
OPTIONS • FUTURES
MUTUAL FUNDS



STOCK|TRAK GROUP
GLOBAL PORTFOLIO SIMULATIONS





FAST-TRAK

NOW, YOUR SCHOOL CAN HAVE
ITS OWN, CUSTOM-BRANDED
STOCK PORTFOLIO SIMULATION
FEATURING:

- LIVE Streaming Updates
- Real-Time Order Execution
- Branded Home Page & Site Color Scheme
- Professor Admin Dashboard for setup and class review

EACH SITE INCLUDES THE FOLLOWING PAGES:

- Student Registration Form
- Rules, FAQs & Support Pages
- Ticker Symbol Lookup
- Stock Charts
- Stock News
- Stock Order Screen
- Mutual Funds Order Screen
- Transaction History
- Individual Portfolio & Account View
- Class Rankings

Are you graduating business majors with no knowledge of the stock market?

Now, with your own university-branded FAST-TRAK simulation, you can:

- Expose **all** of your business students to the markets, not just your finance majors
 - Build your business school brand image
 - Attract more students to your program
 - Make better use of your school's trading room
- all for one low monthly fee!

**Easy to set up,
Easy for students to register,
Easy for professors to
track progress.**

Admin Page ▶
Professors choose
their own trading
parameters

PORTFOLIO AND CLASS PARAMETERS

Currency of Portfolio*:

Initial Cash Balance*:

Position Limit on a Security*:

Allow Day Trading*:

Trading Start Date*:

Trading End Date*:

Class Name*:

Author of Textbook*:

Day of Class:

Time of Class:

Transaction History

This Month

This transaction history is for the week of: January 14, 2009.

TODAY'S TRANSACTIONS

Trade Date	Order	Symbol	Quantity	Price Paid	Commission	Buying Power Change
You have not made any trades today.						
Today's Net Change in Buying Power						\$ 0.00
Current Available Buying Power						\$ 46,790.19

PREVIOUS TRANSACTIONS

Trade Date	Order	Symbol	Quantity	Price Paid	Commission	Transaction Amount
01/15/09	Short	GCOR.CM	-7	85,220.00	25.00	596,515.00
01/13/09	Buy	CLTBYM	1	67,210.00	25.00	-67,235.00
01/13/09	Buy	SWWIX.OPA	1	1,195.00	25.00	-1,220.00
01/13/09	Sell	SWWIX.OPA	-1	1,190.00	25.00	1,165.00
01/13/09	Buy	AAPL	250	93.66	25.00	-23,440.00
01/13/09	Buy	RJPH	450	44.10	25.00	-19,870.00
01/13/09	Sell	AAPL	-250	96.33	25.00	24,057.50
01/13/09	Sell	RJPH	-450	45.60	25.00	20,495.00
01/13/09	Buy	AAPL	240	95.64	25.00	-22,978.60
01/13/09	Buy	RJPH	450	45.06	25.00	-20,302.00
01/13/09	Sell	RJPH	-450	41.00	25.00	18,425.00
01/13/09	Sell	AAPL	-240	90.33	25.00	21,694.20
01/13/09	Short	AAPL	-230	90.33	25.00	20,750.90
01/13/09	Cover	AAPL	230	94.88	25.00	-21,847.40
01/13/09	Buy	FOT	100	64.56	25.00	-6,481.00
01/13/09	Buy	AAPL	230	95.24	25.00	-21,930.20
01/13/09	Sell	FOT	-100	64.67	25.00	6,442.00

Portfolio Screen ▶
Updates to show
profits and losses
every few seconds

ajkandy-1 Player Ranking
Portfolio Return

Equities

ACTION	SYMBOL	LAST PRICE	CHANGE	QTY	PRICE PAID
COVER	IBM	\$85.53	-\$0.18	-282	Delayed
SELL	CSCO	\$16.32	-\$0.08	23	Delayed
SELL	AAPL	\$87.27	-\$1.39	276	Delayed

1

Mutual Funds

ACTION	SYMBOL	LAST PRICE	CHANGE	QTY	PRICE PAID
--------	--------	------------	--------	-----	------------

◀ **Transaction History**
shows students all trades
posted to account

◀ **Class Ranking**
encourages participation
and competition

Home

Class Ranking

- About
- Prizes
- Rules
- Change Password

Overall Group Class

RANK	USER	DATE ENTERED	CASH BALANCE	MARKET VALUE	CURRENT VALUE	% RETURN
1	ajkandy-3	01-13-2009	\$3,024.09	\$97,505.53	\$100,529.62	0.53%
2	ajkandy-2	01-13-2009	\$27,457.88	\$72,769.03	\$100,226.91	0.23%
3	ajkandy-4	01-15-2009	\$3,076.32	\$97,130.39	\$100,206.71	0.21%
4	ajkandy-5	01-15-2009	(\$18,743.51)	\$118,507.45	\$99,763.94	-0.24%
5	ajkandy-1	01-13-2009	\$75,400.23	\$46,984.74	\$99,094.59	-0.91%
6	ajkandy	01-13-2009	\$75,844.18	\$22,888.68	\$98,732.86	-1.27%



College of Business
University of Missouri - Columbia

Stock Market Portfolio Challenge

Home | Portfolio | Trade | Transactions | Summary | Ranking | Quotes | Research

AA0001 (Logout) **Unrealized Profit/Loss**

Unrealized Profit/Loss Today's Profit/Loss

These positions are as of previous Market Close (January 14, 2009).

Open Long Positions as of Previous Market Close

Symbol	Qty	Avg. Cost*	Last Close*	Change*	Change (%)	Mkt. Value (\$)	Gain
B-T080705	10.00	1,000.00	1,000.00	0.00	0.00	10,000.00	
B-T198	1.00	1,093.12	992.18	-100.94	-9.23	992.18	
DKOSX	16.51	30.27	22.15	-8.12	-26.83	365.87	
AAPL	118	95.84	85.33	-10.51	-10.97	10,068.94	
AXP	1	20.93	17.83	-3.10	-14.81	17.83	
BABY	30	11.95	9.59	-2.36	-19.75	287.70	
C	1	7.45	4.53	-2.92	-39.22	4.53	

◀ Custom-brand your FAST-TRAK site with your school's logo, color scheme, messaging, links and splash image

Monday, January 1, 2009 • Markets close in 4:23:45

University of Erewhon
Stock Trading Challenge

Home | Make A Trade | My Portfolio | Quotes | Research

Charts

STOCKS
ADVANCED CHARTS

GOOGLE INC GOOG : NASDAQ

Industry: Internet

1 Day 5 Day 1 Mo 3 Mo 6 Mo YTD 1 Yr

Logarithmic

12/01/08 Open 286.68 High 287.38 Low 270.25 Close 270.87

Player Ranking 0 Portfolio Value \$100,000.00
Portfolio Return 0.00% Buying Power \$200,000.00

SYMBOL	EXCHANGE	QUANTITY	ACTION	ORDER TYPE	DURATION
AAPL	US	280	Buy	Market	Good for the Day

You can purchase up to 280 shares of AAPL. Enter Price \$ Preview Order

APPLE INC AAPL
\$86.48 -\$2.18
quoted 1/13/2009 @ 2:41:00 PM

Last Price	\$86.48	Bid / Ask	\$0.00 - \$0.00
Volume	18,624,697	Day Range	\$86.35 - \$89.74

▲ Advanced Charts provide multiple options to display different chart styles, corporate actions, comparisons, trendlines, and more

◀ Stock Order Screen Easy-to-use, and customized for each equity type, our order screen steps users through each transaction, with helpful information in plain English.

Monday, January 1, 2009 • Markets close in 4:23:45

University of Erewhon
Stock Trading Challenge

Home | Make A Trade | My Portfolio | Quotes | Research | About

Symbol Lookup

STOCKS
DELAYED QUOTE

POWERSHARES QQQ TRUST SERIES 1 QQQQ : NASDAQ

29.35 +1.18 +4.19% 27.88 29.37 165.1M

Category	Growth - Domestic	Expense Ratio	0.20%
Day High	\$29.36	Yield	0.38
Day Low	\$27.88	Annual Dividend (8/18/08)	0.1124
52 Wk High (12/11/07)	\$52.84	Total Net Assets	18.1K
52 Wk Low (11/21/08)	\$25.05	Turnover Ratio	--

Market is Closed - Nov 26, 2008 4:00PM EST Quotes delayed at least 20 minutes

Options

Avg Put/Call Ratio (30d)	0.88	Avg Option Volume (30d)	341,874	Historical Volatility (30d)	64.26
Put/Call Ratio (1d)	--	Open Interest P&C (1d)	--		

PERFORMANCE RETURN

◀ Symbol Lookup provides quotes, a mini chart, options summary and the latest headlines

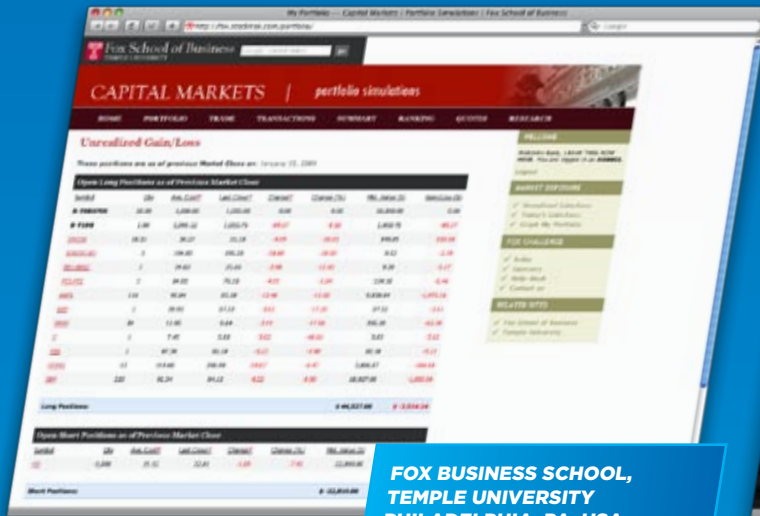


SINCE 1990, StockTrak.com has been the leading financial simulation site for the college market.

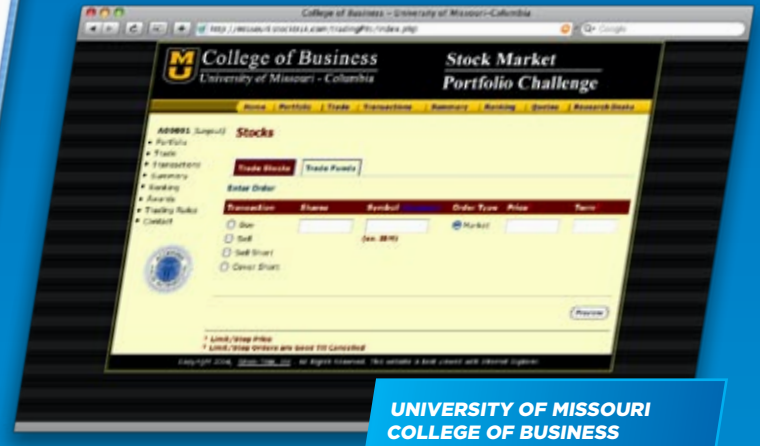
Over 1,000 professors and 50,000 students each year use StockTrak.com as a supplement to their Investments, Portfolio Management, Futures & Options, and other finance classes.



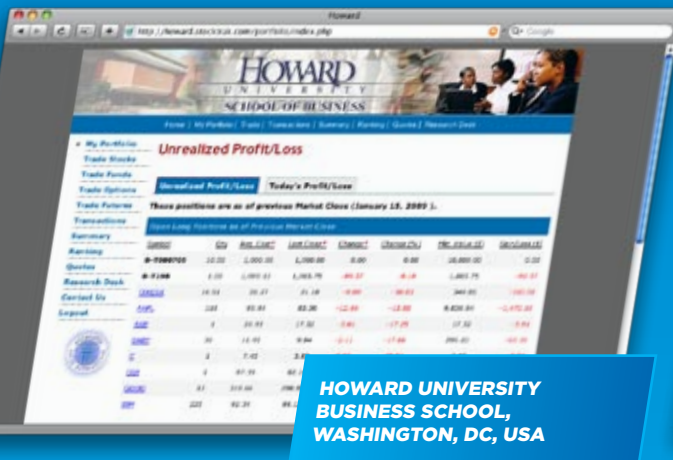
ICMA CENTRE BUSINESS SCHOOL FOR FINANCIAL MARKETS UNIVERSITY OF READING, UK



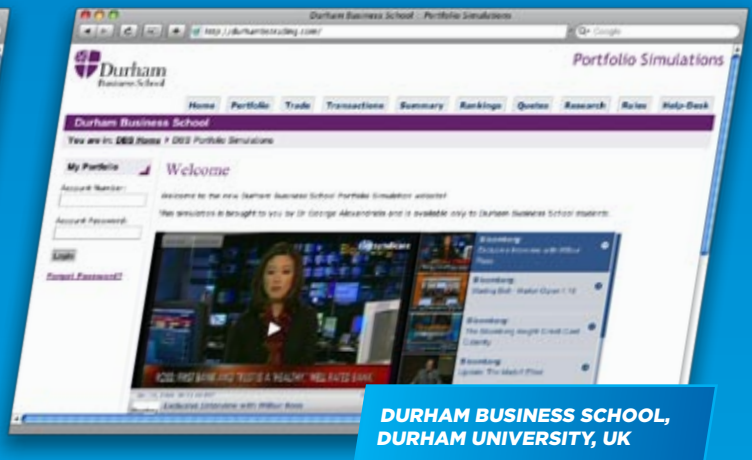
FOX BUSINESS SCHOOL, TEMPLE UNIVERSITY PHILADELPHIA, PA, USA



UNIVERSITY OF MISSOURI COLLEGE OF BUSINESS



HOWARD UNIVERSITY BUSINESS SCHOOL, WASHINGTON, DC, USA



DURHAM BUSINESS SCHOOL, DURHAM UNIVERSITY, UK



ÉCOLE DE GESTION ET SCIENCES COMMERCIALES, UNIVERSITÉ DE SAINT-ÉSPRIT DE KASLIK, LEBANON



FAST-TRAK™

UNIVERSITY-BRANDED PORTFOLIO SIMULATIONS

FOR MORE INFORMATION

Tom Reti, Director of Educational Sales

1-514-871-2222 ext. 232

treti@stocktrak.com

STOCK|TRAK GROUP
GLOBAL PORTFOLIO SIMULATIONS



Place Alexis Nihon, Tower 2
3500 Boulevard de Maisonneuve West, Suite 1650
Montreal, Canada H3Z 3C1

TEL 1 (514) 871-2222

FAX 1 (514) 871-8561

www.stocktrak.com

OTCBB: STKG

